



Module 1: Anatomy and physiology of the nervous system

Overview of the nervous system

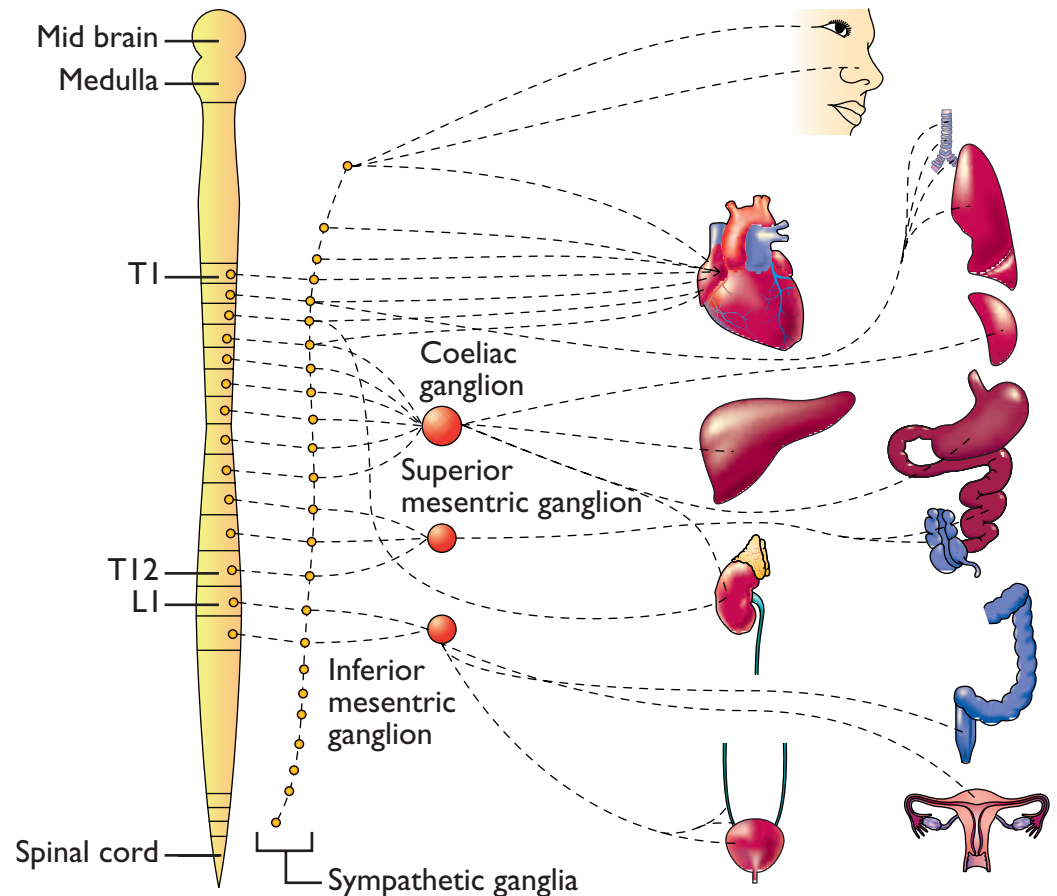
(4 of 8)

The autonomic nervous system (1)¹

The autonomic system is subdivided into:

- **sympathetic nervous system** – sympathetic efferent fibres leave the spinal cord and pass into a chain of ganglia alongside the vertebral column where they form synapses (junctions) with postganglionic neurones which carry the nerve impulses to the effector organs, e.g. smooth muscle or glands. Sympathetic nervous activity prepares the body for action, e.g. increasing heart rate, diverting blood to the skeletal muscles

The sympathetic nervous system¹





Module 1: Anatomy and physiology of the nervous system

The Brain (1 of 8)

Anatomy of the brain

The brain is a highly structured organ with each region having its own important role to play. Nevertheless all areas work together in a smoothly functioning, coordinated system.

A cross section of the brain taken down its midline (a midsagittal section) reveals most of its important structures:

- ❑ medulla oblongata
- ❑ cerebellum and pons
- ❑ midbrain
- ❑ diencephalon
 - thalamus
 - hypothalamus
- ❑ cerebrum.

Midsagittal section of the brain

